

CL-21 Crimper

Process:

- Horizontal/vertical operation
- Drive speed: to 600 meters/minute
- Tow Height: 1,220mm (alternate heights available)
- Process direction: Right to Left **Or** Left to Right

Crimper Rolls:

- Cantilevered, with shafts supported in roller and ball bearings
- Pneumatically regulated roll pressure
- Rolls are equipped for internal fluid circulation
- Roll Material: 440C stainless steel, hardened to Rc 55
- Roll Diameter: 150mm nominal
- Roll Width: 13-50mm

Stuffing Box:

- Stuffing box pressure pneumatically regulated
- Replaceable doctor blade tips
- Swing open front side plate for high speed threading and inspection of crimping conditions
- Provisions for steam injection in lower doctor blade
- Material: Precipitation hardening stainless steel, hardened to Rc 45
- Width: 13-50mm
- Height: 5-25mm available

Cheek Plates (Thrust Pads):

- Pressure pneumatically regulated
- Variable speed rotation

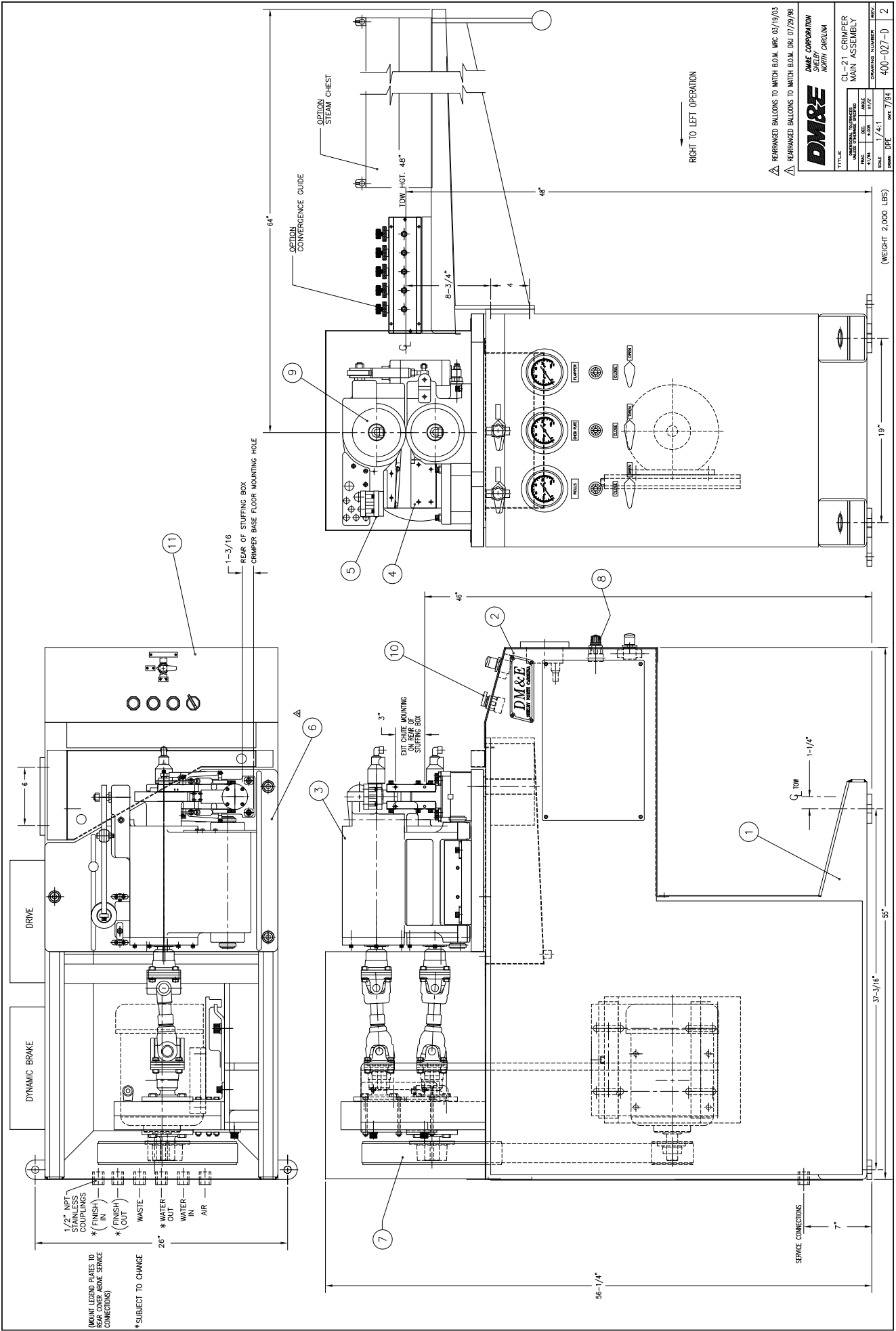
Motor/Drive:

- Variable speed AC inverter drive mounted on crimper
- Energy efficient, inverter capable motor mounted on crimper
- Crimper Control Console mounted on Crimper
- Dynamic braking
- Adjustable motor mount
- HTD timing belt and pulleys
- Belt Guard
- 10 hp (7.5kw), energy efficient, inverter duty, 380460 V, 50/60 Hz motor

Options:

- Integral 1000mm Pre-steamer mounted on crimper frame with automatic steam shutoff
- Convergence guide system to adjust tow presentation
- Adjustable height stuffing box components to tailor box height in 5mm increments
- DS-20 Dancer to regulate incoming tow tension
- Custom discharge chutes

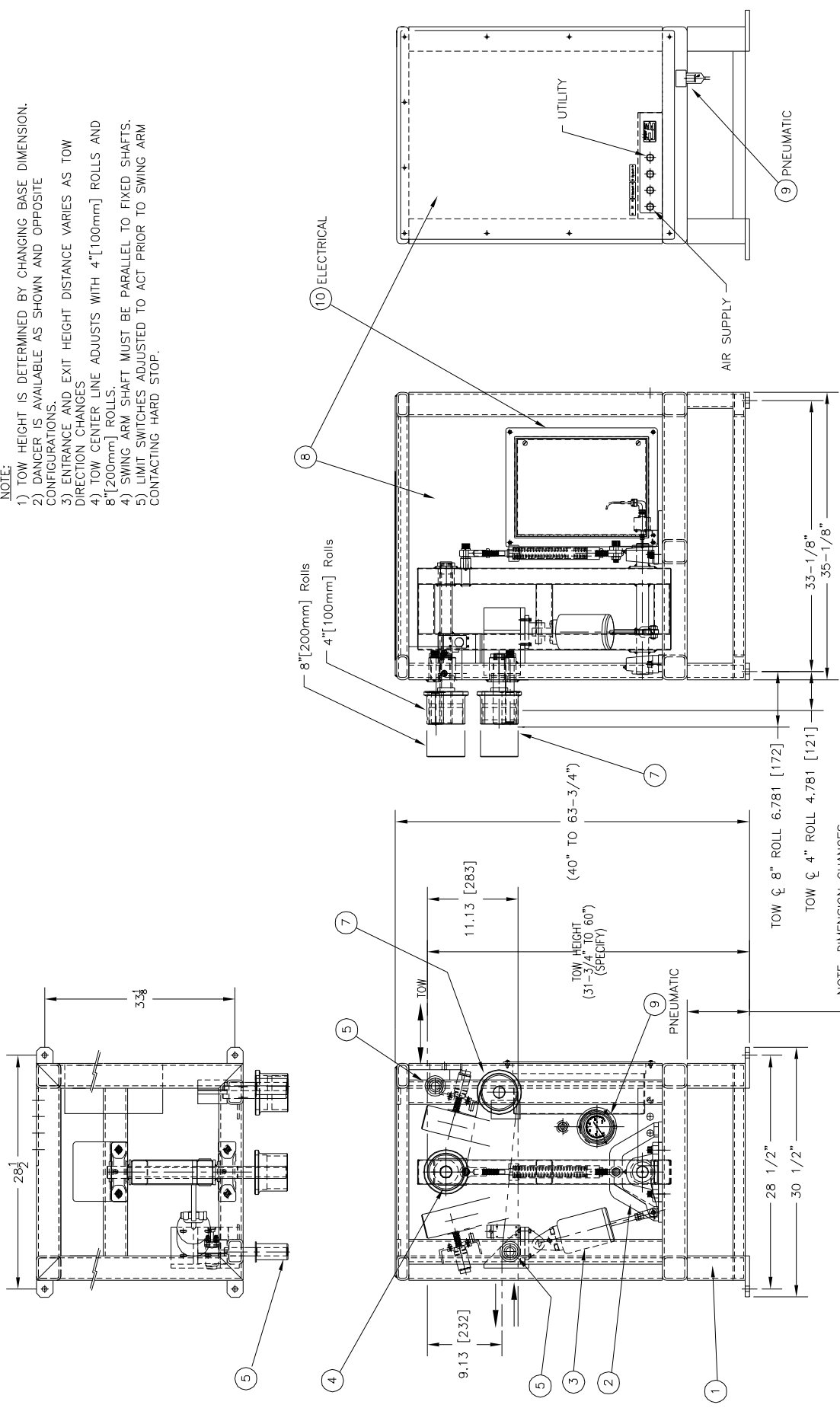
- Complete and ready for installation including motor, drive, pulleys, belt and guard



REARRANGED BALLONS TO MATCH B.O.M. W.C. 03/19/03
 REARRANGED BALLONS TO MATCH B.O.M. DRJ 07/29/98

DM&E		DM&E CORPORATION		NORTH CAROLINA	
TITLE					
CL-21 CRIMPER MAIN ASSEMBLY					
DATE	BY	CHKD	APP'D	REV.	ISSUED
11/14/98	DM&E	DM&E	DM&E	DM&E	DM&E
SCALE	1/4"=1'		DRAWING NUMBER		
DM&E DRJ	DM&E 7/94		400-021-D 2		

- NOTE:
- 1) TOW HEIGHT IS DETERMINED BY CHANGING BASE DIMENSION.
 - 2) DANCER IS AVAILABLE AS SHOWN AND OPPOSITE CONFIGURATIONS.
 - 3) ENTRANCE AND EXIT HEIGHT VARIES AS TOW DIRECTION CHANGES
 - 4) TOW CENTER LINE ADJUSTS WITH 4" [100mm] ROLLS AND 8" [200mm] ROLLS.
 - 5) SWING ARM SHAFT MUST BE PARALLEL TO FIXED SHAFTS.
 - 6) LIMIT SWITCHES ADJUSTED TO ACT PRIOR TO SWING ARM CONTACTING HARD STOP.



DIMENSIONAL TOLERANCES (UNLESS OTHERWISE SPECIFIED)	
DECIMALS	INCH MILLIMETER
.1	±.020 0.50
.2	±.010 0.25
.3	±.005 0.13
.4	±.001 0.025
FRACTIONS	
1/16	±.001 0.025
1/8	±.001 0.025
1/4	±.001 0.025
3/8	±.001 0.025
1/2	±.001 0.025
3/4	±.001 0.025
1	±.001 0.025

1. INTERPRET SYMBOLS PER ANSI Y14.3M-1982.
 2. DEBURR & BREAK ALL SHARP EDGES & CORNERS ON SURFACE WITH SYMBOL: [MARK] IF APPLICABLE.
 3. C'SINK ALL TAPPED HOLES 1-1/2 PITCH x 80°/80° BEFORE TAPPING.
 4. DIMENSIONAL TOLERANCES APPLY AFTER PLATING.